

Beginning Drawing Class - Online Homework Assignment, Value Scale and Light Logic Study

Project Description:

Draw a 9 step value scale in graphite. After you have completed the value scale, draw a white egg or a sphere like object, using a range of graphite pencils.

Begin by watching the video drawing demonstrations below: (enter the class password)

Intro to VALUE:

<https://vimeo.com/403568324>

Value Scale and Egg Drawing Demo

<https://vimeo.com/403543221>

Materials: Bristol Paper (or 18"x 24" drawing paper),
a range of graphite pencils: 4H, 2H, H, HB, 2B, 4B.
18" ruler, Kneaded Eraser, Artist Tape

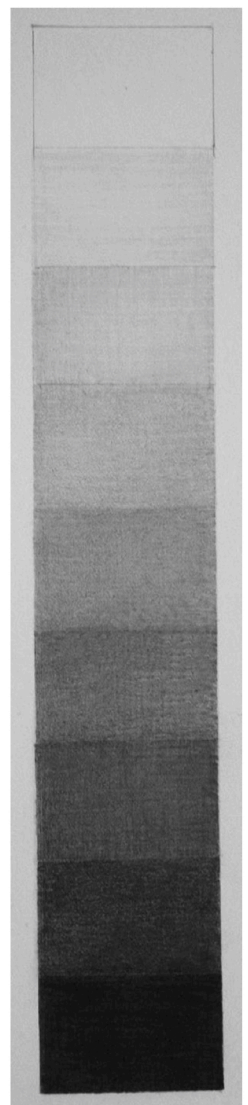
Project Details:

On a sheet of smooth Bristol, create a nine (9) step Value Scale using a range of graphite pencils. After you finish the value scale, do a full value study drawing of a sphere like object, such as a white egg, from direct observation. Set up a strong, single light source on your object. Look for light logic divisions as you are working on your drawing: highlight, middle tones, core shadow, reflecting light, and the pit shadow.

(The object could be an item such as a pure white Christmas ornament or an egg - just make sure that the object is **not** shiny like metal or glass.)



(1.5" wide x 9" tall
value scale)





OBJECTIVES FOR VALUE HOMEWORK:

Measurements consistent to the homework handout

Value Scale: (1.5" wide x 9" tall)

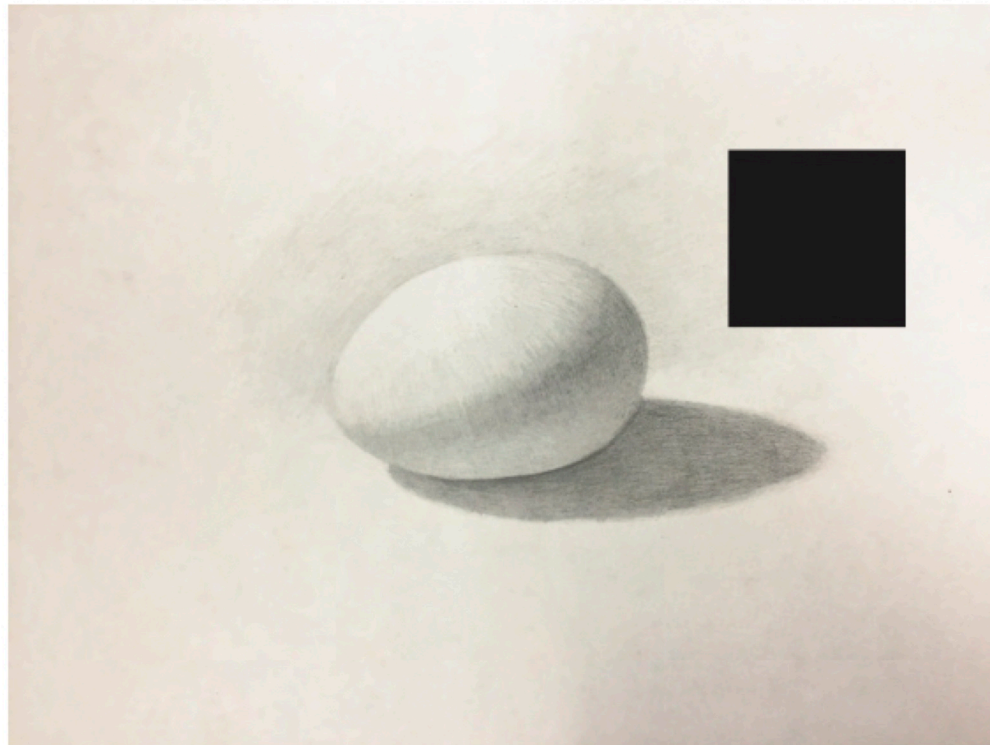
- Consistent rate of change from one section to the next
- Even tones within each section

Egg/Sphere Drawing: (approx. life size or larger)

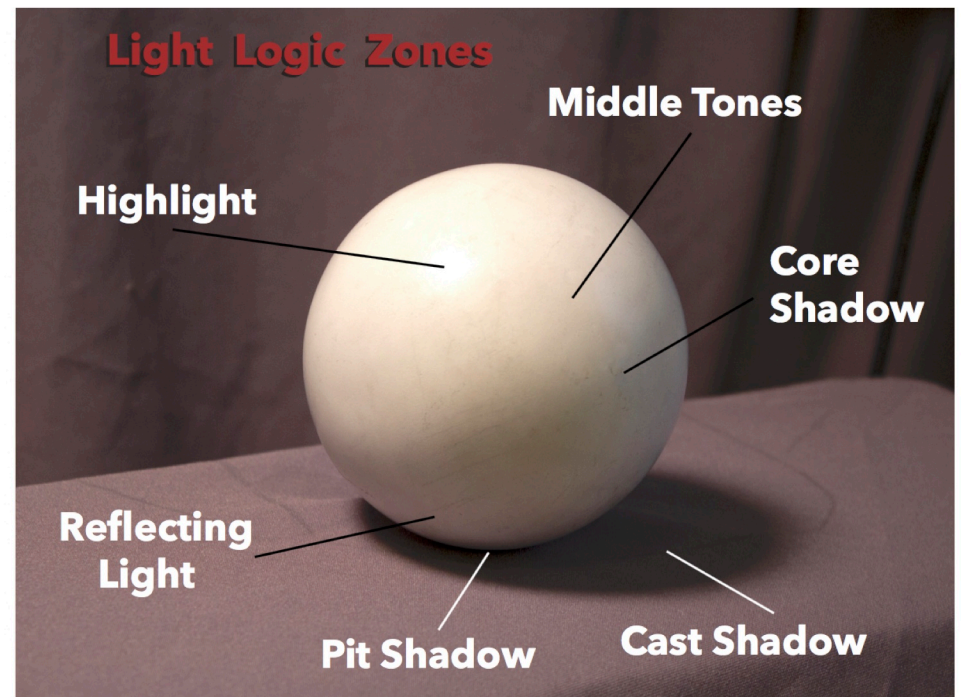
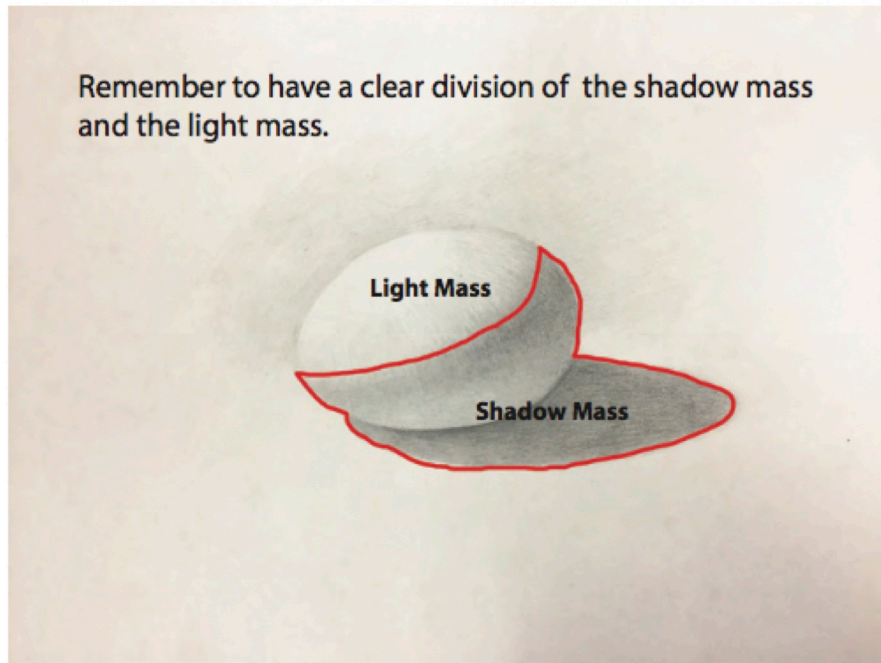
- Accurate proportions
- Clear division of light mass and shadow mass
- Attention to edge variations
- Attention to value relationships
- Attention to zones of light logic

(Do not smudge values with any type of object/material)

This project is intended to build your ability to understand value relationships, the physics of light, the changes in form as well as strengthen your sensitivity in the use of the material. For this reason, you may **NOT** use a blending stump or chamois to create your values or edge variations. You should build up the values and edges in your drawing by using varying degrees of pressure with your pencils.



Notice nothing in the set up of the egg is pure black. Just because a shadow is created does not always mean that it is extremely dark. It depends on the situation. Remember to compare your values to each other in order to determine their relationship.



Light Logic Zones

