

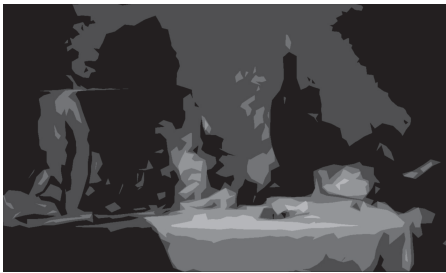
VALUE PATTERN

When thinking about value, most people immediately think about light and shadow and how, when used effectively, the three dimensional representation of volume in space becomes the result.

Equally important is how value can be used to form a mass pattern of light and dark shapes over the surface of your paper. The reality is that your drawing is a flat or two dimensional surface. When introducing values to a drawing, it is very important to think of the pattern of values (mass light and dark shapes). The value pattern is a reaffirmation of the flatness of your paper. This can be very helpful when considering your drawings' composition or design just as it is when considering positive and negative spaces. This value structure within your format then allows you the opportunity to emphasize the elements of light and shadow (light logic) where they are most effective.

The examples, below on the left, show the strong two dimensional value structure of the finished still life images to the right. You can see that when looking for a strong value pattern you reduce your image in the beginning to a limited range of 4 to 5 values. This limited range helps in seeing the composition as an organization of large, balanced masses. It is important to look for these value patterns before getting involved with light logic issues.

Limited Value Pattern Study



Finished Still Life

